

CORRUPTION IN YURUSHI

OUR BRAVE REPORTERS MEET WITH A YOUNG ACTIVIST
FROM THE ARNOCHO-SYNDICALIST FACTION KNOWN AS
CELESTIAL REBELLION

CHAPERONE 254E

WE HAVE AN EXCLUSIVE LOOK AT THE
MANY FACES OF THE CITY OF FORGIVENESS

LUNAR

ISSUE | 0077

THE RISE OF THE NEDS

HOW NEAR-EARTH DYNAMIC SYSTEMS
ARE DISRUPTING INDUSTRIES EVERYWHERE



LUNAR

INTRODUCTION

The magazine of the future

Lunar magazine was founded in 38PW in response to the first moon base re-established after the unspeakable war. This, more than any other single event, was the precursor to the mass settlement of the solar system we see today. Lunar's mission is to bring you up to date articles on tech, lifestyle and politics as humanity once again expands out into our galactic neighbourhood.

STATEMENT

Welcome to the latest issue of Lunar magazine

In this issue we have some very exciting articles for your viewing pleasure. With the upcoming elections we give you an overview of the main parties running and their disagreements. Our intrepid journalists have been meeting with the anarchic celestial rebellion, a group of rebels bent on the destruction of our three party politics. We also take an inside look into the latest creation from Near Earth Dynamic Systems, the incredible NED which I'm sure you have already read about.

This issue also features some fabulous artwork from Chaperone 254e, the AI artist that is creating an inside look at Yurushi city. Chaperone uses the massive amount of data generated by the denizens of this megacity to create some unique and diverse perspectives on the world's greatest city.

We will be talking to the good people at Hensler, the most valuable company in existence, about their incredible visions for the future of life off-earth. We will be learning about the Titanica Elite, the world's most expensive spacecraft which is currently being completed by White Star Shipyard.

... and so much more! We hope you enjoy Issue 0077 of Lunar and thank you once again for subscribing to this ancient form of communication.

WHAT'S NEW

You may have noticed that this issue we have removed the names of our writers, this is down to our advance compliance with section 347e due to be discussed in the senate after the next election cycle. Lunar magazine firmly supports the journalistic protections in 347e.

GET IN TOUCH

Yurushi:

Address: 350 Solar Avenue, 324th floor
Gonza, Yurushi YU 150-0013

Koms: #&8HSSN/

Press desk:

Got a story or article you think would be suitable for Lunar? We want to hear from you!

Press Desk Koms: #&8HSSP/

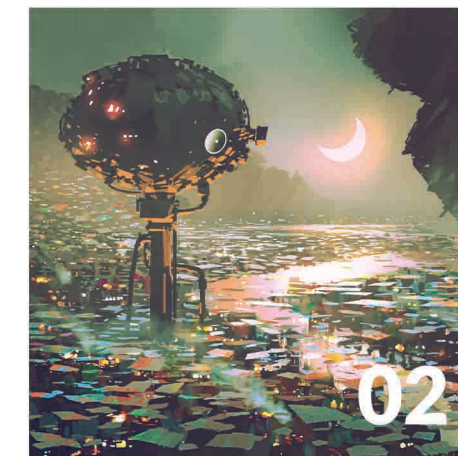
For all complaints please visit our digital pages. As a policy we do not respond to public complaints.

CONTENTS

01. Rise of the NEDS: The divisive incredible machine from Near Earth Dynamic Systems 5-8
02. The Work of Chaperone 254e: The AI artist's unique views on the city of Yurushi 9-19
03. The Shinjabra Street Race: A brief report on this terrifying annual event 20
04. Hensler's Future Cities in Space: An overview of the amazing future of our solar system 23-28
05. Corruption in Yurushi: An interview with a member of the Celestial Rebellion 31-34
06. Titanica Elite: Get to know the world's most expensive spaceship 35-38
07. Yukohama Space Elevator: 6 awesome facts about this wonder of the solar system 39-40
08. History of the Solar System: Get to know the corporations that influence our solar system 43-64
09. The Lunar Election Special: An overview of the three major political parties 65-68
10. Hensler BioDome: The building that is populating the solar system one planet at a time 71-72



Rise of the NEDS
How Near Earth Dynamic Systems are disrupting industries everywhere.



Yurushi City
We have an exclusive look at the many faces of the city of forgiveness, from the genius Chaperone 254e.



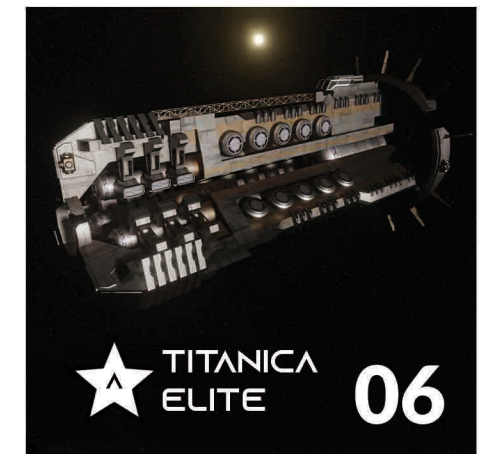
Shinjabra Street Race
6 amazing facts about this remarkable achievement.



Hensler's Cities
A view of the future by the richest corporation in human history!



Celestial Rebellion
A courageous interview with a key member of this secretive group.



Titanica Elite
An overview of the latest and greatest creation from White Star Shipyard.



OMENUKO SHIPYARD

"Creative technology for the ultimate flying machines"



We are a proud member of the

Inter-Planetary Trade Center



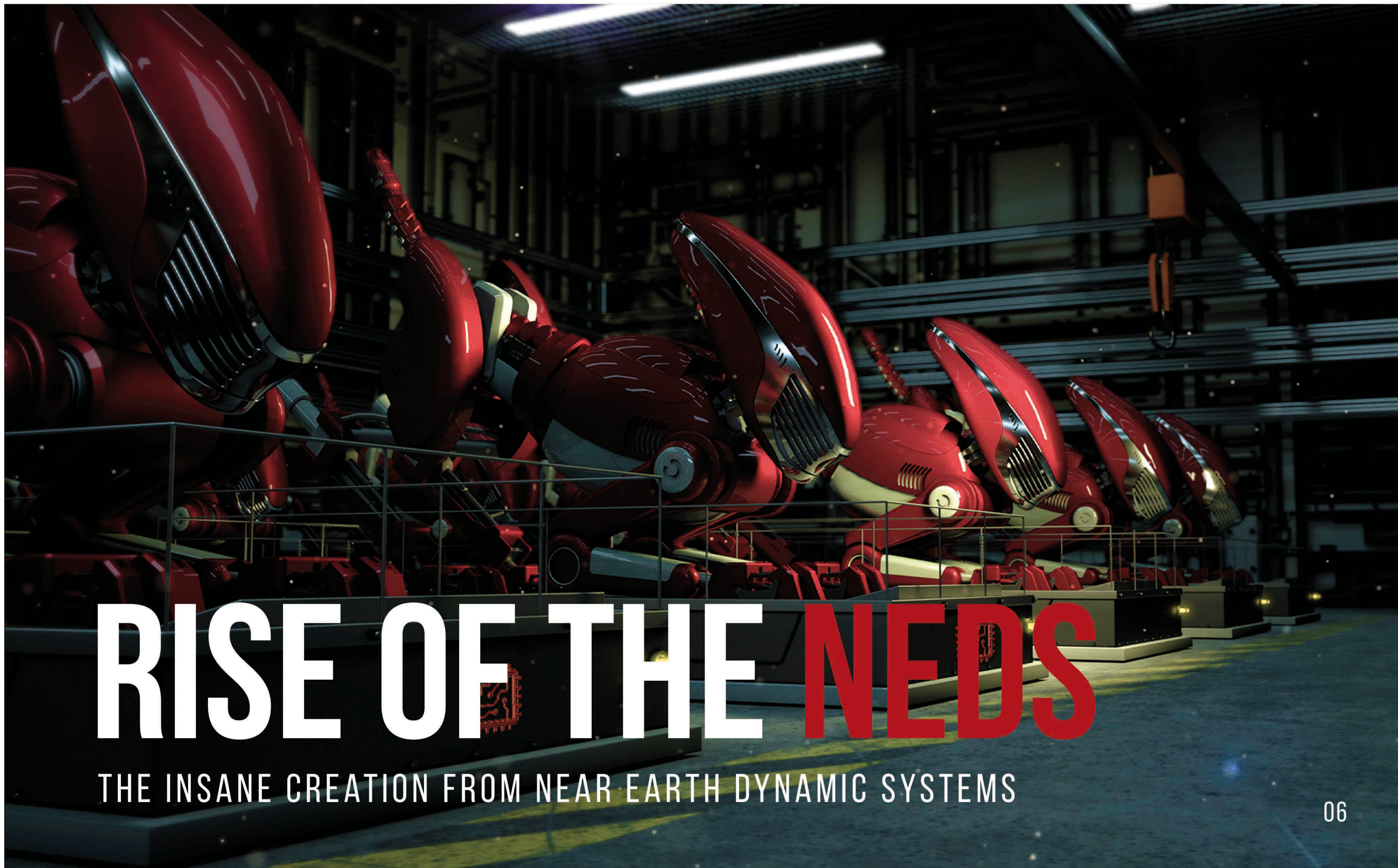
We are a proud member of the

Inter-Planetary Trade Center



RIO ASTRO CORP

OFF EARTH MINING SPECIALISTS



RISE OF THE **NEDS**

THE INSANE CREATION FROM NEAR EARTH DYNAMIC SYSTEMS

MEET THE GANG

Could this be a game changer for human industry? Or is it the endgame for employment?

A recent video press release from the startup Near Earth Dynamic Systems has produced a huge reaction both positive and negative. They seem to have made a fully autonomous robotic worker who is connected to the Shepherd AI system. These amazing machines can tirelessly complete nearly any task they are assigned.



Meet the NEETLE. Thousands of these nano robot bugs are present in each larger NED. They all have access to the same Shephard AI system so they can complete operations at even the smallest of scales.

We visit the NEDS on their home turf!

The consequences of this breakthrough in industrial robotics are potentially enormous, as such they are of course divisive. On the one hand, corporations are desperate to get their paws on these tireless workers who operate at the highest level and never unionize, never demand a pay rise and are continually upgraded with the most up-to-date data available. On the other hand, the slums of Saitama are already filled with the workers made redundant from the initial advances of the Shepherd AI. For them, this will just mean new neighbours and more scarcity. We are invited into the NEDS workshop to meet these controversial creations. Our guide in this adventure is Victoria De La Rose Chief Communications Officer for the company.

The first thing that hits you when you enter the factory is the sheer scale of this operation. It is not clear where this startup gets its funding but it is unsurprising that it is pipped to be one of the largest companies in the solar system in the next few years. As we walk through the factory we are met with the gleaming red metal of over 1000 NEDS. These huge robots resemble giant dogs with no faces. They are all, for the moment, still immobile, inert but their crouched pose suggest a readiness, their huge steel limbs suggest power.

"Do you want to see one in action?"

Victoria casually asks us as we eye the creatures warily. Without waiting for an answer she taps a few buttons on her koms and the creature to our left springs to life. Springs is the correct term as these things are incredibly nimble.

These remarkable machines are actually called NEDS-MX#23004b1, however they have unsurprisingly come to be known simply as NEDS or a NED in the singular.

The heart of a NED is deliberately made to resemble that of a mammal. Victoria explains that millions of years of evolution have developed the perfect shape for maximum fluid motion efficiency. Watching these monstrous machines in action I can't help but wonder if this harmless slightly comic nickname is a deliberate distraction. Particularly as Victoria starts to explain the potential uses for these machines with the burgeoning UFSS Peacekeeping Force.

One thing is for sure. NEDS are officially here and here to stay, I certainly wouldn't want to get on the wrong side of one!



The beating silicone heart of the NED

YURUSHI

THE MANY FACES OF THE CITY OF FORGIVENESS

The art of Chaperone 254e

After its meteoric rise from the ashes of the unspeakable war we look at the city from the view of a native.

Indeed '*native*' may even be a weak term for this artist. Chaperone 254e is an AI artist whose source code is derived from the great Shepherd AI system first created right here in the city. Chaperone uses their access to millions of streams of visual data to create views of the city that will be instantly recognisable to some residents and like an alien land to others. Chaperone will take regions of the city that are frequented by specific and often isolated groups of residents and then amalgamate this vast amount of data into a single scene. The aim of this series of digital paintings is simple: to help us understand our city from another point of view. Could there be any better metaphor for Yurushi city itself?

The first picture is of the Yukohama spaceport as seen from the shores of Ogi Island. The residents of the island almost exclusively work within the spaceport and so Chaperone has captured the view of one from the other. With the space port being open 24 hours a day it is not surprising that the residents of this area see the city as a night scene.



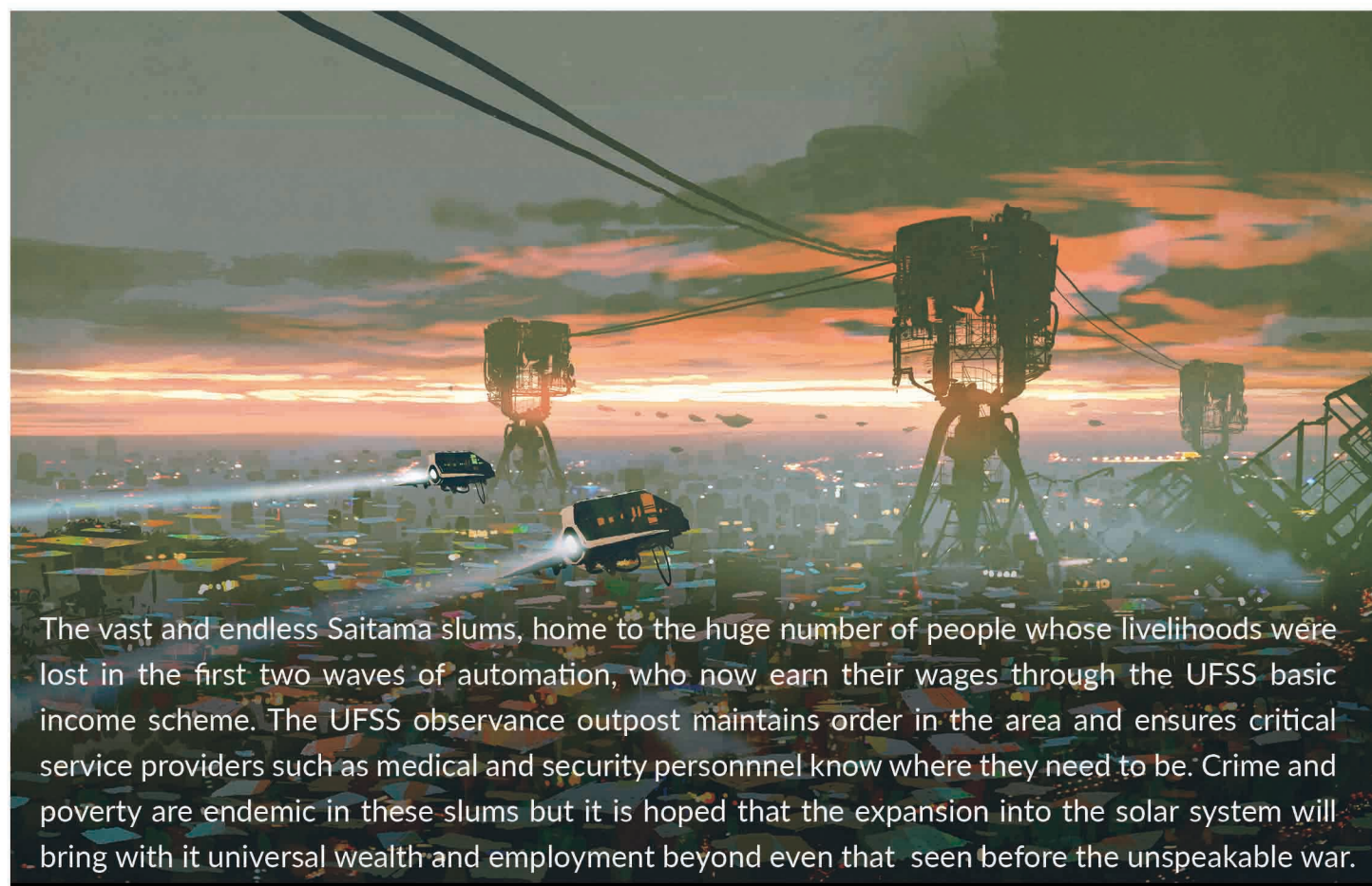


DENG BOAT MARKET

A picture of the deng boats in the Negishito Bay area. The deng boat community live and work almost exclusively at night where their boats connect together to form a giant floating market which sells some of the best seafood in the solar system (as well as many more illicit items). The Yukohama spaceport can again be seen in the distance.



THE SAITAMA SLUMS



The vast and endless Saitama slums, home to the huge number of people whose livelihoods were lost in the first two waves of automation, who now earn their wages through the UFSS basic income scheme. The UFSS observance outpost maintains order in the area and ensures critical service providers such as medical and security personnel know where they need to be. Crime and poverty are endemic in these slums but it is hoped that the expansion into the solar system will bring with it universal wealth and employment beyond even that seen before the unspeakable war.



GOLDEN GAI

The back alleys of the Golden Gai. These streets in the north of the city are perhaps the biggest melting pot of the city. Patrons of all backgrounds come to frequent the thousands of tiny bars and restaurants that sit on top of one another reaching up over 60 stories into the sky. Many workers in this area will have numerous jobs in different bars and so in the evening you can witness their death-defying feats of swinging between their workplaces using lines of old electric cord. Occasionally these break...

SHINJABRA

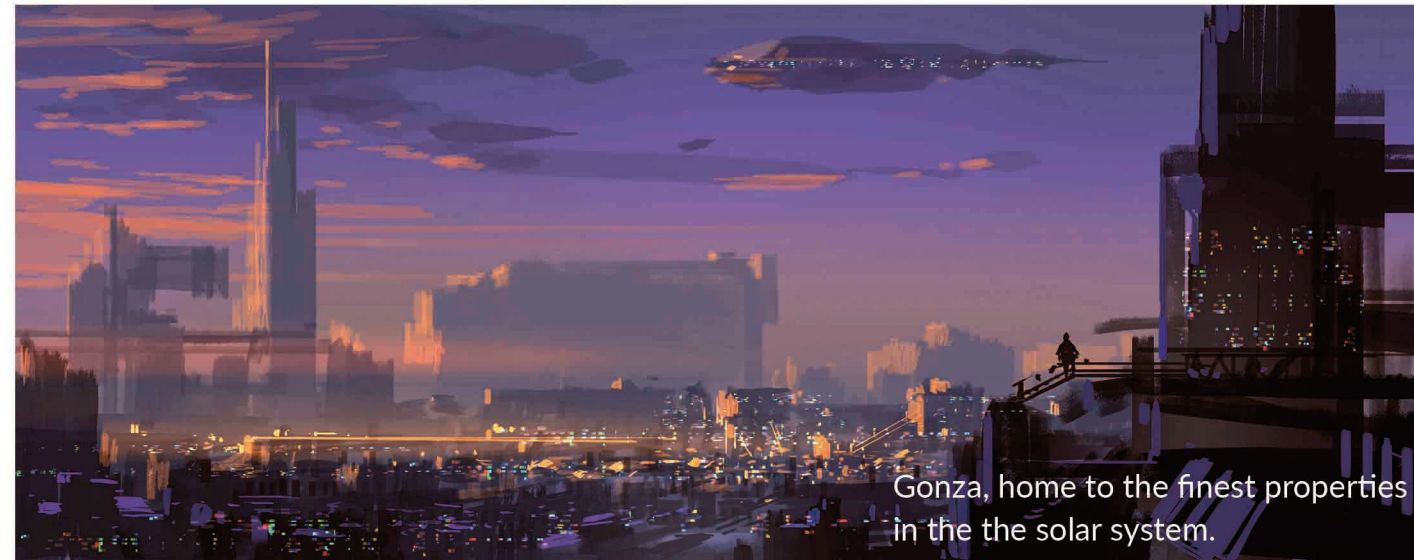
The backstreets of Shinjabra, as with much of the city, these suburban streets sit in the shadows of the Yukohama spaceport and the local denizens are very often reliant on the vast sums of money this brings to Yurushi. This is one of the most diverse areas of the already diverse city. Shinjabra is famous for its intricate maze of tightly knit streets. It is very easy to get lost in these streets and the petty crime rate means that travel here is not for the faint of heart, but if you do learn the streets some of the best food on the planet is said to be available.



Locals communicating on their koms as they travel the maze-like streets.

GONZA

The purple skies of Gonza are a regular feature of high society magazines everywhere. The property in this neighbourhood is some of the most expensive in the solar system. The flight path embargo keeps the noise level down while still being a reasonable distance from the spaceport. Its highly equipped private local defence force means this is one of the few areas of Yurushi city to have benefited from zero crime for over a decade.



Gonza, home to the finest properties in the solar system.

AOGASHIMA

South of FujiSan7 across the sea is the small island of Aogashima, once a thriving holiday resort before the unspeakable war. The radiation levels on this island are still deadly to those who enter, but desperation leads many from the Saitama slums to attempt the journey. Relics from this area are known to sell for high prices to collectors in Gonza.



The island of Aogashima: beautiful yet deadly.

SHIBUYA

There is no one centre of Yurushi City but the most iconic area is possibly the wide streets of the popular shopping district, Shibuya. Known for its abundant nightlife, this area is the first spot seen by tourists to the city. It is their views that Chaperone 254e brought together in this work.





THE NERIMA STACKS

Home to more than half of all Yurishi City

Drifter jets streaming over the Nerima stacks. This is the single most heavily populated area in the solar system with each building housing over 12,000 individuals.

The thick intelligent cladding of the buildings blocks a proportion of the noise and the toxic particles in this area mean windows are rarely opened. Still, Chaperone notes the endless screaming sound of these drifter jets as they cruise towards Yukohama spaceport. It is an ever present part of the subconscious of those living in this region.



FUJISAN7

The Shy Mountain

A view from the foothills of FujiSan7. This dormant volcano is by far the highest peak in the greater Yurishi area and it marks the outer reaches of the city.

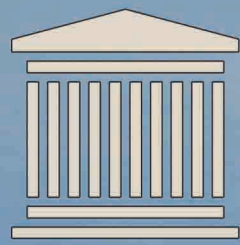
The air quality on this peak is not recommended for human consumption but there are those that climb the peak regularly, taking up wealthy tourists who have the highest specification breathing equipment. The life expectancy of these hardy adventurers is understandably far below the city average, even if you factor in the Saitama slums.

03 THE SHINJABRA STREET RACE

The annual Shinjabra street race will be held next month. This legendary event is one of the most well attended and divisive in the Yurushi calendar. Every year over four thousand participants create fabulous and fearsome vehicles to compete in this event which is as much a fashion show as it is a motor race. These hover vehicles range from the sleek to the downright absurd.

The race has a darker side to it as well, the prestige given to the winning vehicle is so great that engineering companies have been known to resort to sabotage and even murder to ensure victory for their machines. Added to this, Shinjabra itself is a populated area and crashes are common. The scale of damage done to civilian properties even led to the UFSS banning the event five years ago, although the following year's race ended up being the largest on record and this policy was quietly dropped. Love it or hate it, the Shinjabra street race is here to stay and let's face it, you know you'll be watching too!





THE ROYAL BANK OF YURUSHI

Currently Accepting New Corporate Clients!

"Borrow and prosper"

We are a proud member of the



Inter-Planetary Trade Center

NAKAMURA FLIGHT ACADEMY

EST. 2044



Our mission is to produce safer more proficient pilots with the use of the most advanced training techniques and supplements. Nakamura-trained pilots learn not just how to skilfully maneuver spacecraft but how to maintain these crafts. This dedication has meant our safety record is second to none.

Hensler

Inter-planetary urban
architecture



HENSLER

The Corporation that's building cities in space.

This magazine was founded during the early days of the space race which only seems to be speeding up as time passes. It seems as if everyone is talking about the vast resources available in our solar system and how access to it can potentially solve all our problems. So as companies rush and compete to bring us to this utopia we wanted to take a moment to look at what that future might look like.

The space architecture company Hensler (who help support this magazine) have put together some 3D renderings of their visions for the future of this solar system. A future that is not too far away!

Hensler is well-known as the most highly valued corporation in the solar system and the plans they have for their vast wealth are certainly living up to expectations.

What can you do when you have trillions of credits and a thirst to settle the galaxy? The answer is simple, quite a lot!

In this feature we look at the not too distant future of our lives away from planet earth.

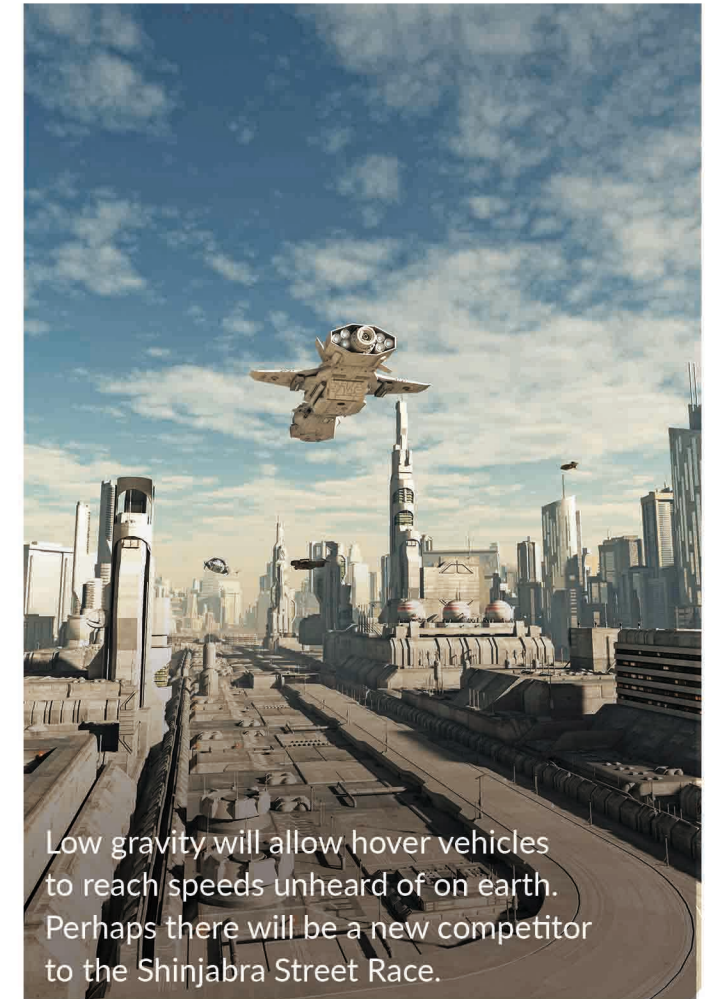




A benefit of the low gravity would be cheap hover vehicles that could ferry hundreds of passengers around these new cities.



Hensler cities come complete with heavy infrastructure and multiple redundancies to ensure survival in unfriendly atmospheres.



Low gravity will allow hover vehicles to reach speeds unheard of on earth. Perhaps there will be a new competitor to the Shinjabra Street Race.



Maglev loop systems will transport passengers between these cities at remarkable speeds, perhaps even approaching that of the Yukohama space elevator.

RYOKO TRAVEL AGENCY

The solar system's premiere travel agency

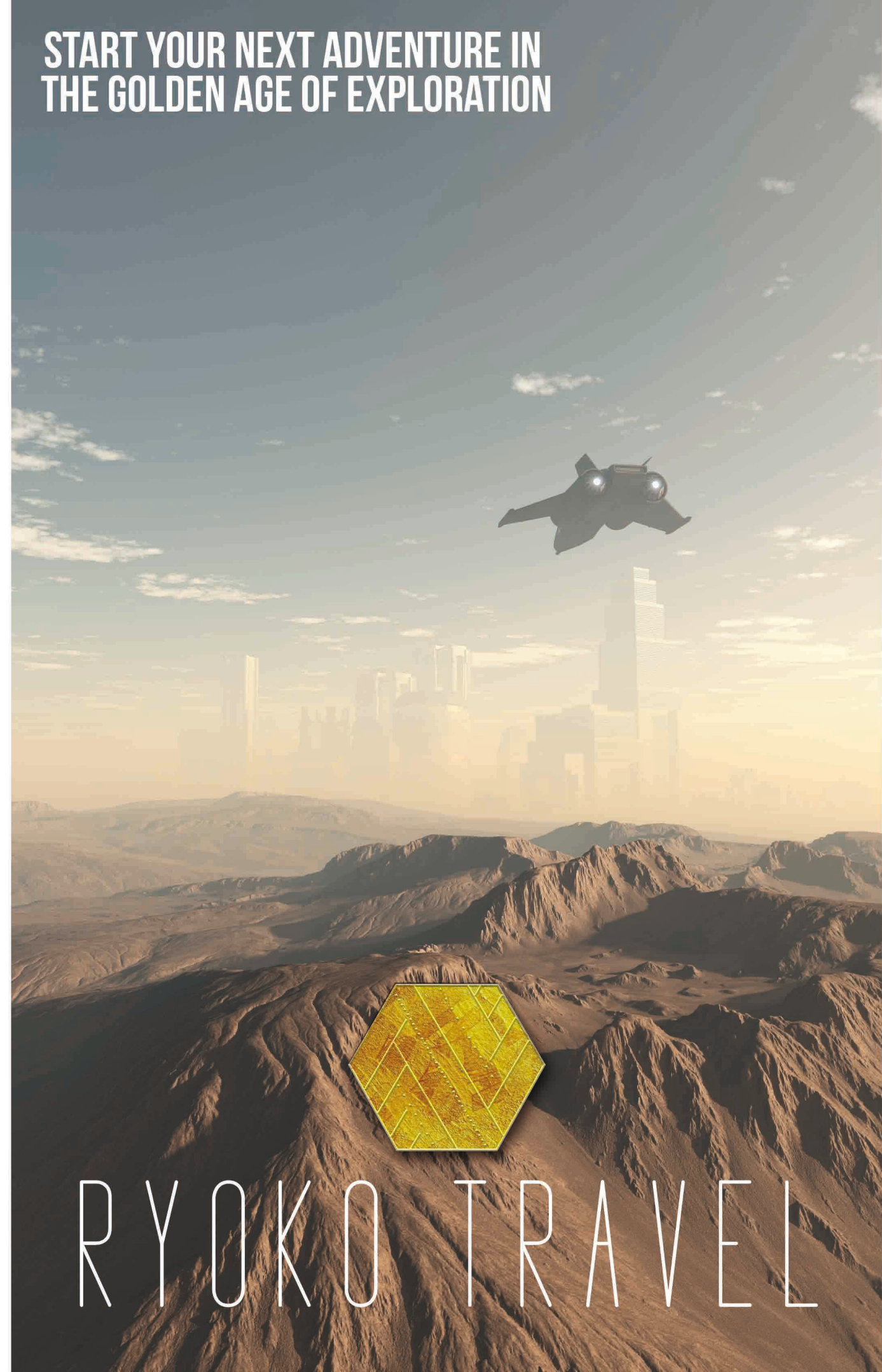
Travel to exotic locations throughout the solar system. Ryoko Travel have fantastic package deals to over 50 locations both on earth and beyond. We have options for every budget and you can even buy now and pay later.

Ryoko Travel is committed to luxury and safety. Our holidays are taken by over 12 million customers every year and 9 out of 10 would recommend our services to a friend.

Fancy leaving Yurushi for the ancient city of Cairo72? Ryoko is the only way to go!



START YOUR NEXT ADVENTURE IN THE GOLDEN AGE OF EXPLORATION



RYOKO TRAVEL

CELESTIAL REBELLION

CORRUPTION IN YURUSHI

Interview with an activist for the Celestial Rebellion

I am sitting in a small retro bar, 20 floors up in the Golden Gai. The blue neon lights flicker in the rain outside as the workers in the restaurants transition to their evening jobs in the bars, swinging from building to building on old wire ropes.

I am about to meet Michiko Arshaka, a young electro-violinist who made headlines last year for her solo protests in the streets of Gonza where she would play her violin naked covered in animal blood. She is known to be part of the movement known as Celestial Rebellion, an anti-corruption group of anarcho-syndicalists. Recently a series of coordinated protests and attacks on UFSS buildings have led to discussions on whether they should be reclassified as an illegal terrorist organisation.

Arshaka enters the bar. She is flanked by two large masked individuals who represent the Celestial Rebellion, one is wearing a silicone mask featuring a female anime character and the other a black balaclava with the Celestial Rebellion logo painted on the front in white. Both are extremely large men. The four of us and the bartender fill the tiny hole in the wall bar. I am immediately instructed that no recording of this meeting will be permitted. Arshaka is currently awaiting her trial for suspected arson and vandalism of UFSS properties but it is made clear that this is a topic not to be discussed. Instead, we talk about her motivation and experiences in challenging the endemic corruption in her city. She says she has a message for young people everywhere.

I'm Michiko Arshaka, a 21 year-old CR activist. I graduated from Yurushi Comprehensive musical college last year and I play the electro-violin.

She seems to be nervous and following a fairly scripted approach so I try to put her at ease with a few more informal questions. As she relaxes I ask her how she became involved with the Celestial Rebellion.

I've heard about the riots in '38 and obviously I know the events of the unspeakable war. But it was learning more about how the unspeakable war started that made me want to stand up to the rising corruption, although it took me a long time to find the courage to do so. We know what this corruption can lead to if nothing is done...

She pauses.

We might not have a future.





THE RIOTS IN '38 WERE A DIRECT INFLUENCE ON ARSHAKA

Once I had understood this, I had to do something and it has been my life ever since. I contacted the CR (Celestial Rebellion) through some contacts in the Saitama slums and they set me up with a channel to present my political music through and it all spiralled from there. Putting myself out there onkoms showed me that I'm not alone and whatever happens to me, it's worth the sacrifice.

The individual in the female anime mask behind her places a hand on the young girl's shoulder. Something in the gesture suggests their relationship extends beyond political camaraderie. Being a political activist in Yurushi is a highly risky undertaking. I pressed her for more information on the sacrifice. She turns to one of her guardians before answering and a slight nod indicates our conversation may be slightly more contrived than I was led to believe.

In Yurushi you can be arrested for just gathering in a square with a few people if it's not approved by the UFSS beforehand. I have become a bit more well-known since I first started but I'm still afraid of what the government will do to me. Many of my comrades in CR have been, "disappeared".

Accusations of these disappearances are rife in the Celestial Rebellion community however we weren't able to verify any of these events.

The corporations run the city, Arshaka explains. People think the Workers' Union Party is on their side but they are just as much a part of the problem as the bigots at Brave New Dawn. We keep having these so called "elections" to make people think they are making a difference but did you know that for the last 15 election cycles the party that received the most money from corporations won the election?

The senators don't even pretend to have their own policies anymore, they're all just chasing the same credits as everyone else. One day there's a new megastructure being built that's going to change everyone's lives and the WUP gets in power, the next the UFSS coffers are empty and the United Federalists step in or Brave New Dawn if the economy is really bad. Nothing ever changes, no ones' lives ever get better, the Saitama slums just grow everyday with more and more workers made obsolete by the damn Shepherd AI.

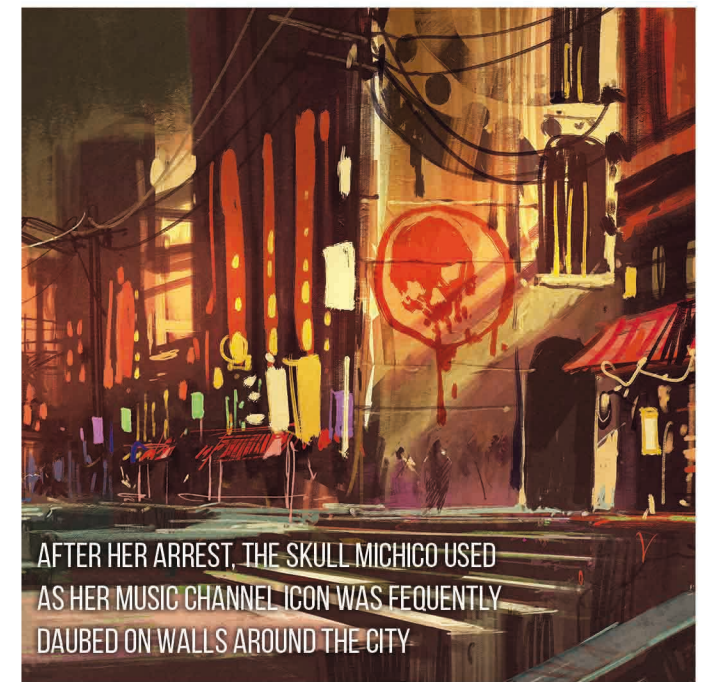
I ask Arshaka about the growing Modern Trade Union movement championed by the Shepherd AI as a potential solution to the problem of automation-related unemployment. Anime face mask behind her mutters something angrily in a language I don't understand. Arshaka replies quickly.

We thought they would help us at first but they ended up being worse than all of them.

I press her for more information on this but she is not forthcoming. This is the most emotional I have seen her in the interview. I am about to try a more suitable approach when all three of my companions receive messages in unison on their koms. There is a hushed anxious exchange of words between the guardians, again in a different language. There seems to initially be disagreement between the two men as to how to react to this unknown communication but this is cut short by an angry phrase from the man in the balaclava who turns to leave. His partner turns his anime mask to Arshaka's ear to whisper something. It occurs to me that she too did not understand the exchange.

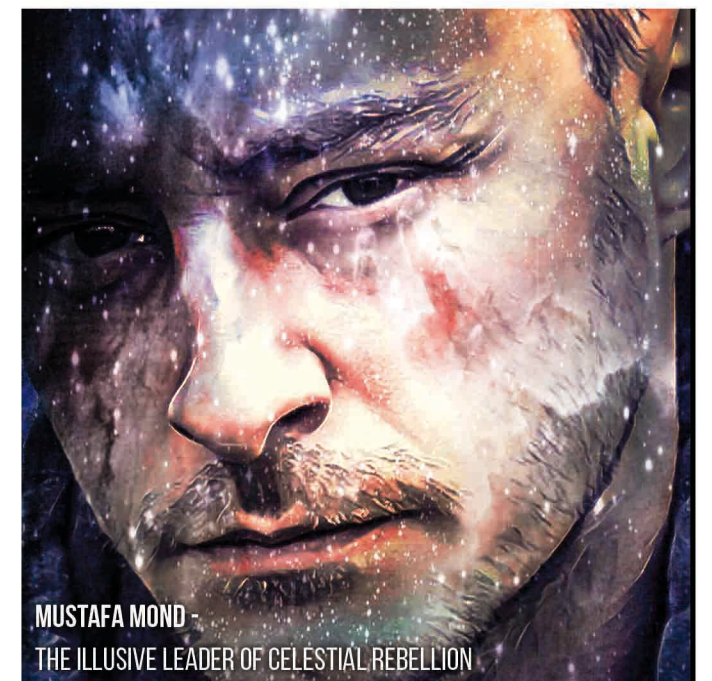
We have to go

Michiko says this looking a little pale and getting up to leave. I ask for a photograph with her and her companions to accompany the piece but this is again not permitted.



AFTER HER ARREST, THE SKULL MICHICO USED AS HER MUSIC CHANNEL ICON WAS FREQUENTLY DAUBED ON WALLS AROUND THE CITY

With a slam of the door the three are gone and I am left with just the bartender who has mostly managed to keep himself obscured in this tiny bar. He gives me an unfriendly look and offers me a drink.



MUSTAFA MOND - THE ILLUSIVE LEADER OF CELESTIAL REBELLION

Postscript: As I was taking notes in the bar after the meeting something interesting happened. The bartender casually mentioned that it would be better if I reported positively on my meeting with Arshaka, "she has supporters in more places than you might think" he says to me meaningfully. "And right now we need actions, not words."



WHITE STAR

THE COMPANY BUILDING THE SPACESHIPS OF THE FUTURE

THE TITANICA ELITE

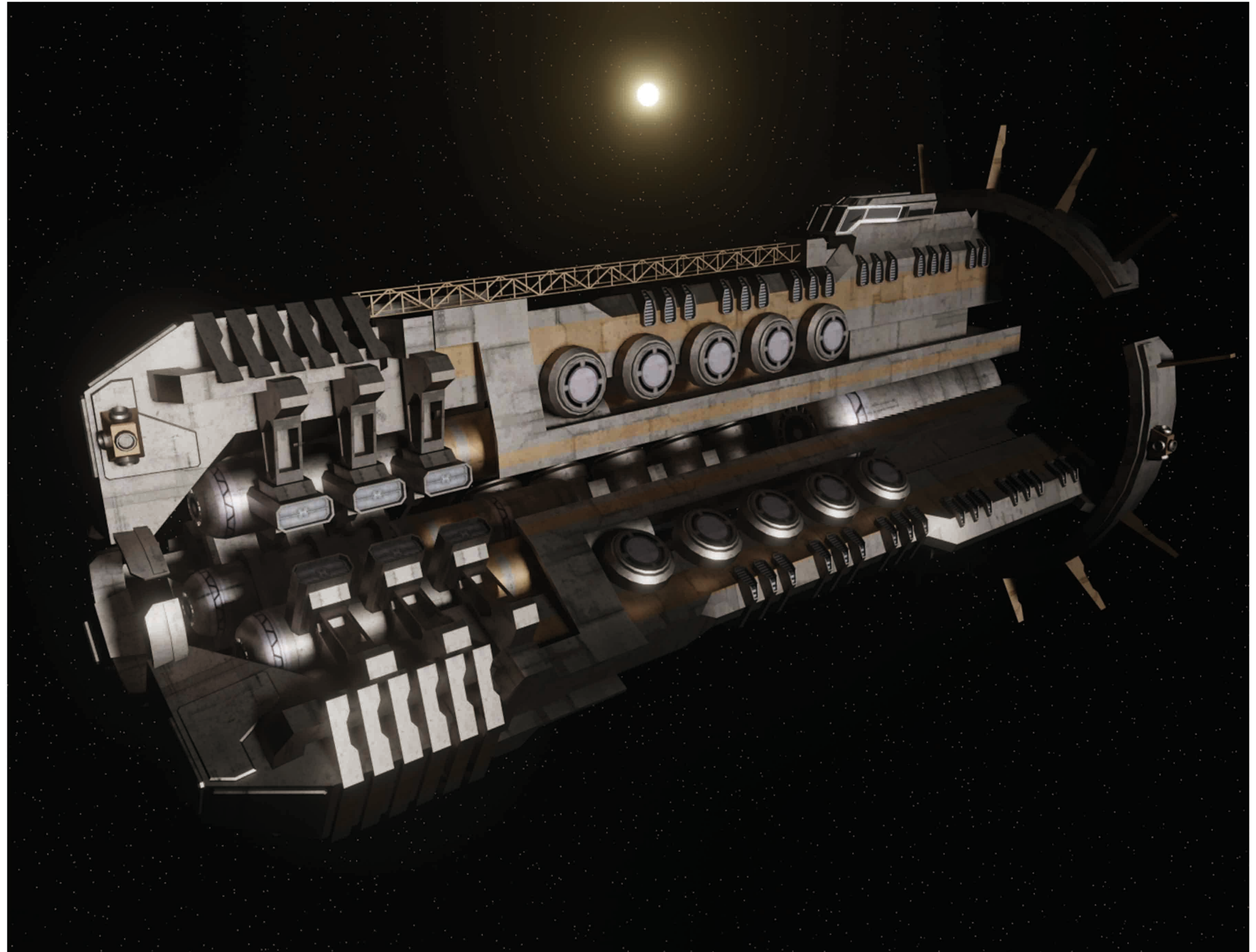
THE MOST EXPENSIVE SHIP EVER BUILT

When it is complete the Titanica Elite will be the most expensive ship ever built but does this high cost of entry come with any benefits? Absolutely! Come join us as we tour the solar system's most advanced commercial spacecraft.

The first thing you notice when you observe the ship is the sheer scale of it. Measuring over 5 kilometers in length it looks more like a mountain than a ship, yet it moves with grace and speed. White Star claims that, when complete, it's Helium 3 fusion engines will be able to travel the entire length of the solar system using only renewable and abundant resources. It comes with a complete mining and extraction system which can delve into distant celestial objects and withdraw valuable materials or indeed capture and recycle the useful debris left behind by less ecological spacecraft.

The most impressive aspect however is the length of time it allows passengers to remain in space. This ship contains an entire ecosystem within it and is a one-stop shop for travelling the solar system. Theoretically, passengers could remain on the vessel indefinitely, growing and recycling all their needs aboard the ship itself!

So how many of these behemoths are being created? Just the one, will you be the first owner of this fantastic piece of technology?



SPACE ELEVATOR

THE YUKOHAMA SPACE ELEVATOR

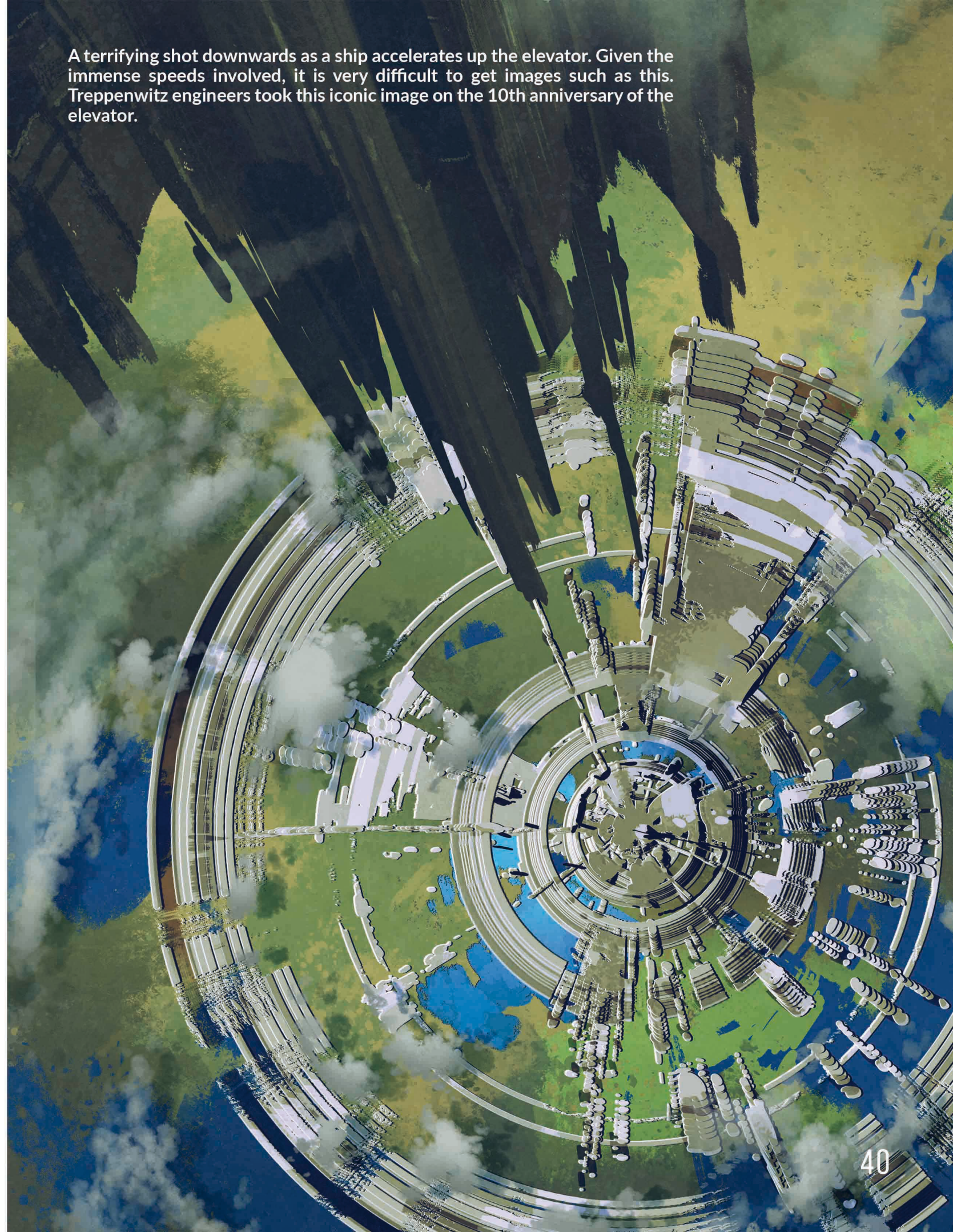
The wonder of the modern world!

The Yukohama Space Elevator is a marvel of human/AI engineering co-operation and perhaps the greatest man-made wonder in the solar system. In this feature we want to give you a deeper insight into the fabulous megastructure you see everyday.

6 awesome facts about the Yukohama Space Elevator:

- 1.** The Yukohama Space Elevator is the largest single construction ever built, extending out 35,786 kilometers into space.
- 2.** The elevator itself is made possible by the use of diamond nano-threads which are the only material we have ever encountered strong enough to withhold the vast forces acting upon it each day.
- 3.** The elevator itself is used by 14,000 ships every single day.
- 4.** It takes 6 hours and 47 minutes to ascend to the top of the elevator, meaning its users travel at a staggering speed of 5275 kilometers per hour!
- 5.** On the creation of the elevator, Shepherd AI declared it to be the defining symbol of a united solar-system.
- 6.** The first ship to use the space elevator was the Stellar Flare, an original xerxes class ship made by the White Star Shipyard.

A terrifying shot downwards as a ship accelerates up the elevator. Given the immense speeds involved, it is very difficult to get images such as this. Treppenwitz engineers took this iconic image on the 10th anniversary of the elevator.



WOTHERBY'S

Wotherby's auction house is the finest and most respected in the solar system. With a history dating back to before the unspeakable war, Wotherby's has always been synonymous with passion and luxury. We sell only the finest and most exclusive projects and artifacts for collectors and connoisseurs.



TRADITION AND LUXURY

Wotherby's auction house operates in an exclusive, purpose-built, off-earth station. This ensures the high level of discretion our customers demand.



ELECTION

THE LUNAR ELECTION SPECIAL

A guide to the three main political parties to help you decide how to use your vote.

In these unprecedented times it seems the rush to populate the solar system is the only issue that matters in our upcoming elections. Each of our major parties has a clear and distinct vision as to how we should proceed with this settlement and ultimately, you will get to decide how and who will lead us into these new celestial horizons.

In this election special feature we will take a deep dive into the three main political parties that are vying for your support. What is their history and what do they claim they will do if you put them into power?

It seems that there is a vast amount of misinformation around these parties. This election special aims to be as objective as possible to empower you to make the best choice for you and your family.

So, without further ado, we bring you the Workers' Union Party, the United Federalists and Brave New Dawn.



WORKERS' UNION PARTY

"From each according to their ability to each according to their need"

After the rise of mass automation a political voice was needed for the rights of obsolete labourers. The Workers' Union Party (WUP) has the goal of equally distributing the huge proceeds gained from the exploitation of the solar system.

They are strong advocates of the UFSS Peacekeeping Force and Trade Unions. They believe that corporations should be footing the bill for expansive and elaborate megastructure projects around the solar system. They believe this can be funded by levying high taxes on lucrative corporate bases made by companies such as Hensler.



THE UNITED FEDERALISTS

"Do not let us mistake necessary evils for good"

Formed after the unspeakable war and the collapse of the United Nations, the United Federalist Party is a centrist union aimed at promoting peace through discourse and political compromise. It is led by Shepherd, a hyper-intelligent AI who was a vital force in our rebuilding from the ashes all those years ago.

Shepherd's United Federalists strongly oppose the building up of the UFSS Peacekeeping Force and have historically always taken a moderate approach on the divisive issues of the day.



BRAVE NEW DAWN

"Iustitia suum cuique distribuit"

The Patriotic People of Earth Party, or Brave New Dawn, was founded as a reaction to, and rejection of, the calls from the United Federalists for regulations to be placed on solar system excavation and rights to be granted to the emerging "off-earth" population. They are staunch advocates of putting the Earth first in all political decisions.

They are supporters of the new UFSS Peacekeeping Force and have pledged to expand this. They also prefer to allow market forces to dictate growth decisions, minimising tax on corporate bases and defunding some of the more expensive megastructures which they see as wasteful.



COMMERCIAL

16 PSYCHE | THE ASTEROID WITH THE GOLDEN CORE



PSYCHE: THE 10 TRILLION CREDIT ASTEROID!

Disclaimer: This article was in part sponsored by White Star Shipyard and Hensler Space Architecture.

Unless you've been living under a rock you've probably heard about the latest investment craze in off-earth mining opportunities. The asteroid of Psyche, which supposedly has a solid gold core. We want to take some time to address these claims and let you know if this is where you should be investing your hard-earned credits. Firstly, the good news is that the gold is real, the asteroid seems to be made up of largely nickel and iron with an enormous quantity of gold at its core and, at today's prices, this gold is worth an astronomical amount.

That being said our advice is not to invest in the thousands of companies that are promising eye-watering returns on your investments for one simple reason: the gold is valuable now but as soon as we get hold of it, its value will drop. Those that got in early will be fabulously wealthy and everyone else will lose out. If you're reading this, you did not get in early. We only need to look back a few years to the same investment craze that spread when we began mining Helium-3 from the moon. It was indeed valuable in our reactors but, ultimately, the newly found abundance of the resource drove down the prices from their astronomical highs. If you're looking for investments, our advice is to think long-term about the future of solar system settlement and go for a company that has some clear goals on that front. If it's not too forward of us to say, there are two of our sponsors who fit that bill, White Star Shipyard and Hensler Space Architecture!

A public Service Message from

**The Greater
Yurushi Municipal
Employment Center**

Lost your job to automation?

**Living in the greater
Yurushi area?***

**Did you know you could be
eligible for a living wage?**

**Book an appointment now and
you could be receiving your
payments within the year.**

***Greater Yurushi metropolitan area excludes the area of Saitama.
Terms and Conditions apply**

You may be forced to give up your residential property if you enroll on this scheme

**AKINS & VAN SHOYOC
LLP**

EST. 24PW



“One vision, one firm.”

AT AKINS AND VAN SHOYOC WE PROVIDE OUR CLIENTS WITH A SUPERB LEVEL OF PERSONALIZED SERVICE TO SHAPE AND CHANGE THE PLAYING FIELD TO YOUR NEEDS. OUR INTENSE CONNECTION WITH AND EXPERIENCE OF THE UFSS ALLOWS YOU TO ACCESS AND INFLUENCE THE POLICIES THAT MATTER TO YOUR COMPANY.

THE HENSLER BIODOME

Making the pioneers of the solar system a little more comfortable.

The Hensler BioDome is the latest creation from the space habitation experts at Hensler Space Architecture and Engineering Company. The giant 12 kilometer dome is purpose-built to create living space on any reasonably sized rocky planet or moon. A space, they argue, where people don't just survive, they thrive. Hensler claim this latest creation can support a population of 32,000 people complete with schools, hospitals and recreational activities.

The BioDome is capable of doing extensive scientific experimentation in its location which will enable occupiers to make the best use of the resources available to them. It can search for valuable minerals to export and can even set up a 3D printing facility where you can use local resources to create more BioDome at a fraction of the cost. Hensler argue that these franchised domes can easily repay the admittedly high cost of the initial dome over a time period of less than 25 years.





OH MY GOD! IS HE DEAD?
WHAT SHOULD WE DO?!

WHAT DO YOU MEAN?
WE DON'T NEED
TO DO ANYTHING,
I'M SURE IT'S THERE
FOR A REASON



OH YES,
DON'T YOU WORRY ABOUT HIM,
WE'RE AWARE OF THAT.
NOTHING TO WORRY ABOUT



BUT WHY,
WHAT DO YOU MEAN?
HE'S DEAD!...



WE KNOW!
WE PUT HIM THERE ...
AS BAIT

YOU PUT HIM
THERE?!? AS BAIT?
WHAT ARE YOU TALKING ABOUT?
BAIT FOR WHO?



YUKI, WHAT ARE YOU
TALKING ABOUT?
THIS MAN IS DEAD
IN THE MIDDLE OF
THE STREET!

YOU'RE VERY STRANGE
TODAY PHILIP,
NO ONE ELSE SEEMS
BOtherED BY THIS
SO CHILL OUT



WHAT'S WRONG
WITH EVERYONE!?
I'M GOING
TO THE POLICE

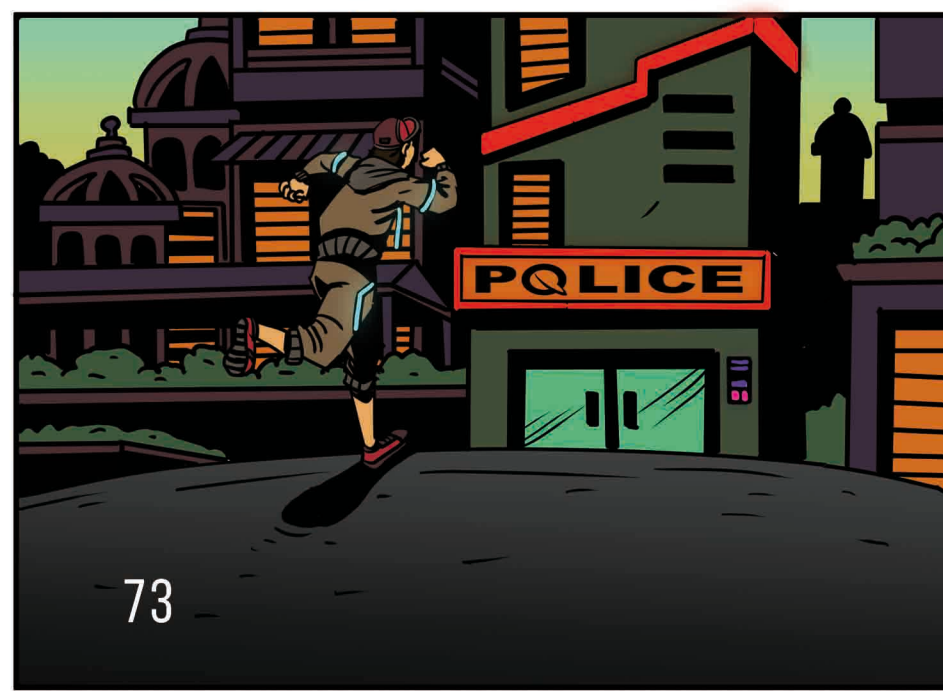
I THINK THE HOSPITAL
WOULD BE BETTER.
YOU'RE BEING VERY WEIRD
ALL OF A SUDDEN,
ARE YOU ILL?



FOR YOU
OF COURSE,
OR PEOPLE LIKE
YOU ANYWAY.

WE WANTED
TO SEE WHO WOULD
COME ASKING ABOUT
HIM AND HERE
YOU ARE

NOW
YOU'RE GOING
TO HELP US FIND
SOMEONE ELSE!



IN THE TOWN...THERE'S A MAN
HANGING FROM THE LAMPPOST,
BUT NO ONE SEEMS TO CARE...

PLEASE COME QUICKLY,
THERE'S SOMETHING
VERY WRONG!



OH MY GOD!
LOOK AT THAT!
QUICK, WE HAVE
TO HELP HIM!

HUH? HELP WHO,
WHAT'S GOT YOU
SO FLUSTERED?

ENLIST TODAY!



**UFSS PEACEKEEPING
FORCE**

"PEACE THROUGH STRENGTH"

NO 77

LUNAR



ISSUE | 0077

Lorem ipsum dolor sit amet enim. Etiam ullamcorper. Suspendisse a pellentesque dui, non felis. Maecenas malesuada elit lectus felis, malesuada ultricies. Curabitur et ligula. Ut molestie a, ultricies porta urna.